

MARINER COURT

3625 Del Amo Blvd., Suite 300

Torrance, California 90503

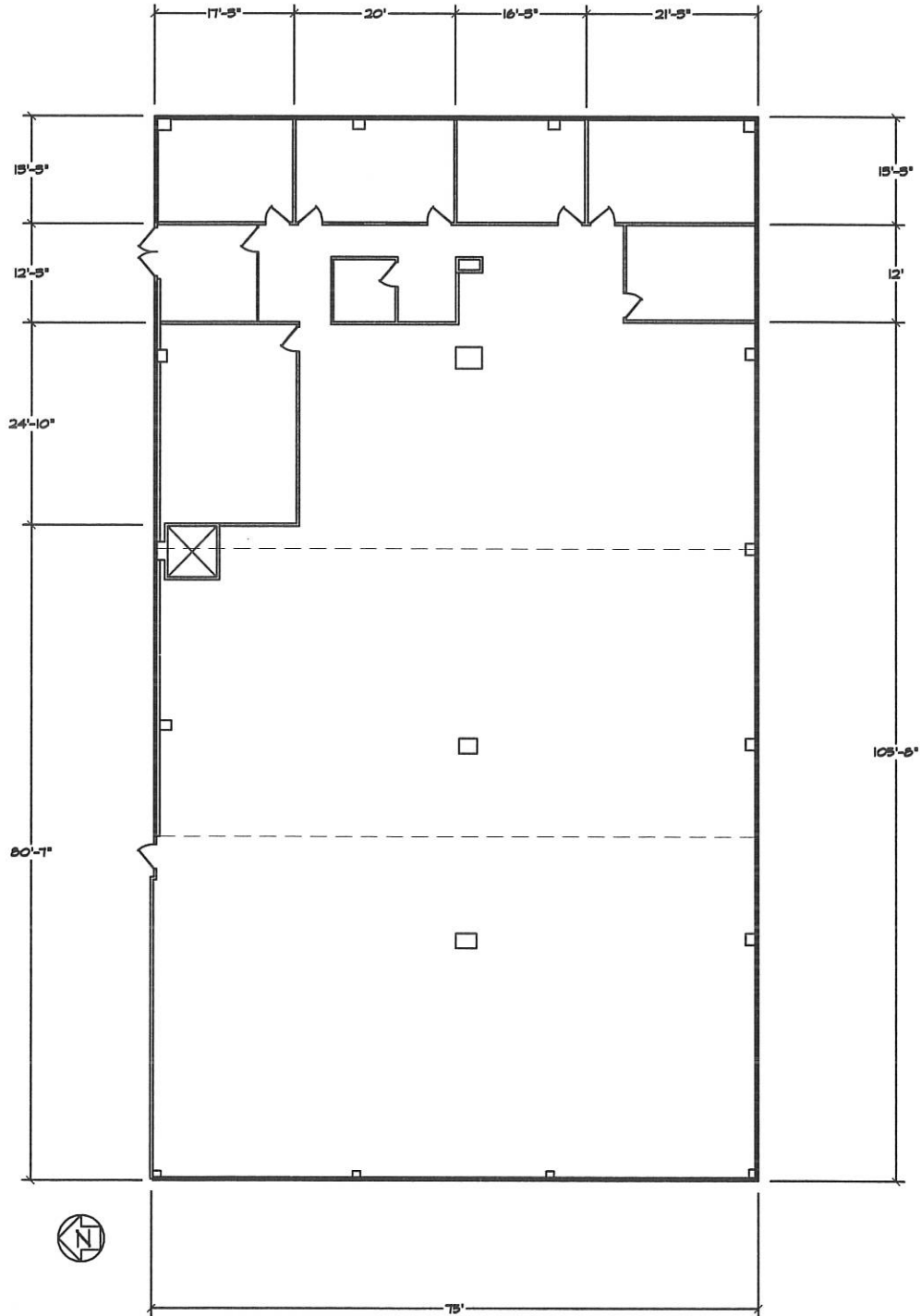
Scale 1/16" = 1'-0"
Date of drawing 12-25-23
Date of revision 00-00-00

CURRENT FLOOR PLAN

SUITE 300

SUITE 310

SUITE 315



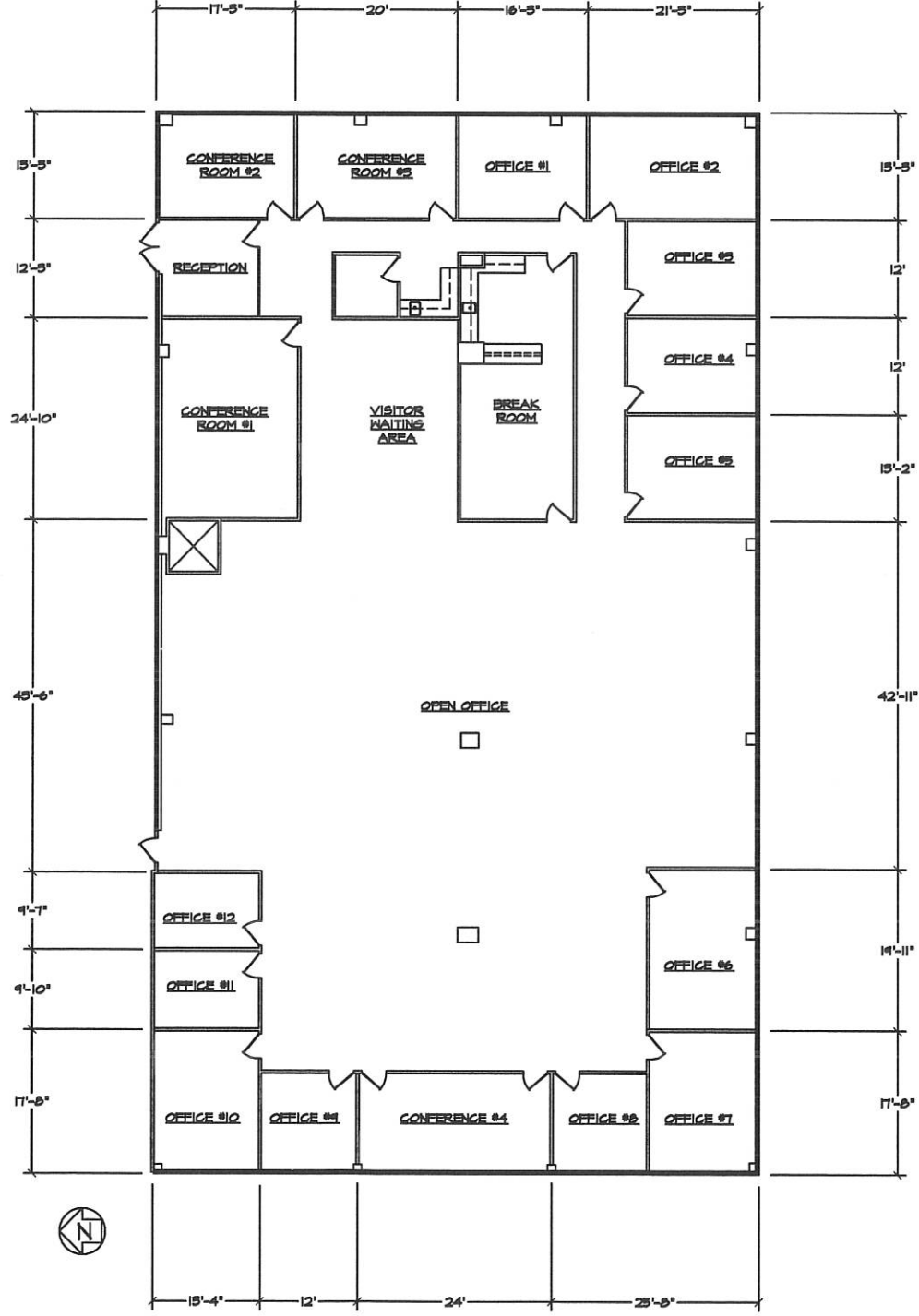
MARINER COURT

3625 Del Amo Blvd., Suite 300

Torrance, California 90503

Scale 1/16" = 1'-0"
 Date of drawing 12-25-23
 Date of revision 00-00-00

FLOOR PLAN OPTION #1



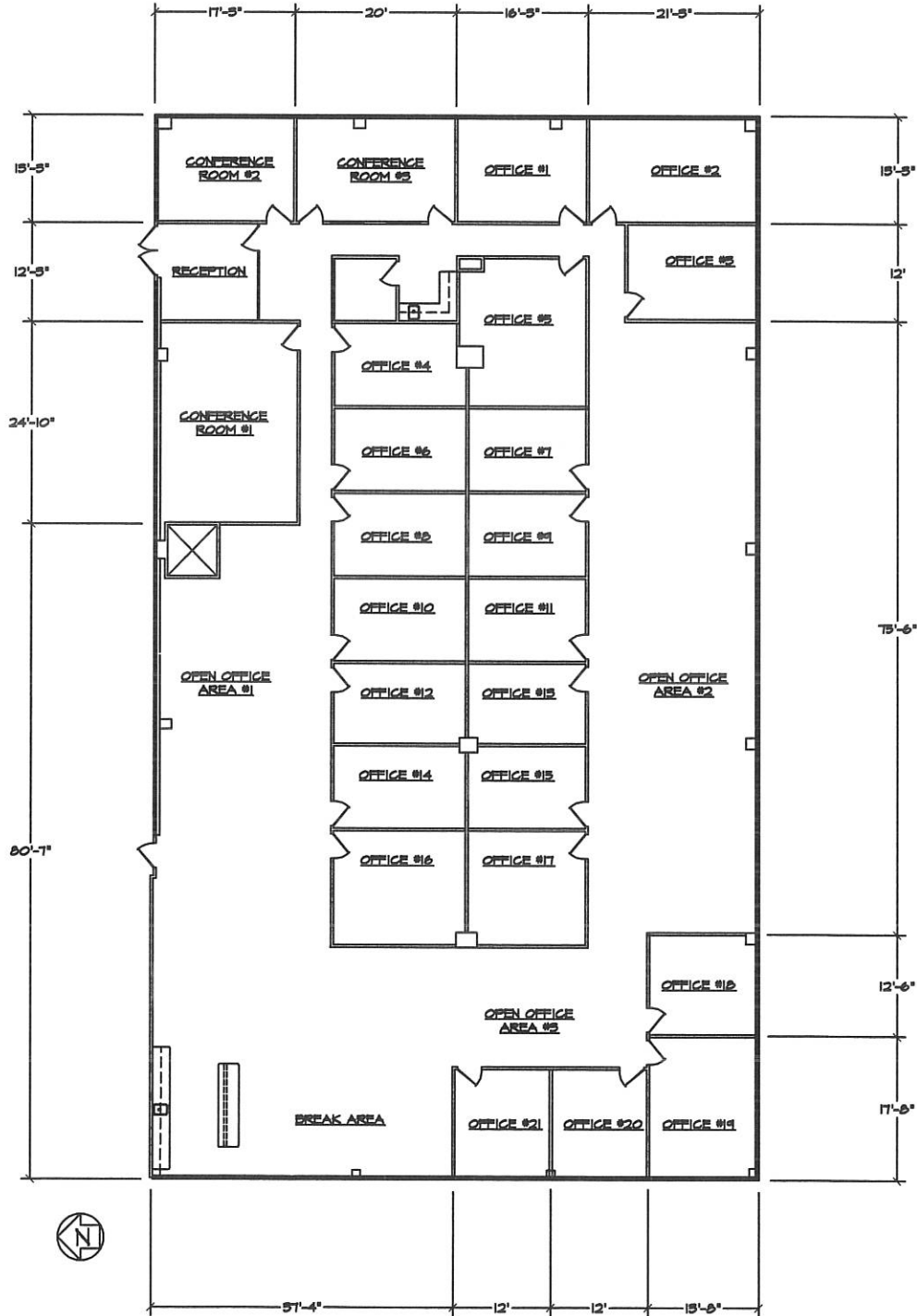
MARINER COURT

3625 Del Amo Blvd., Suite 300

Torrance, California 90503

Scale 1/16" = 1'-0"
 Date of drawing 12-25-23
 Date of revision 00-00-00

FLOOR PLAN OPTION #2



MARINER COURT

3625 Del Amo Blvd., Suite 300

Torrance, California 90503

Scale 1/16" = 1'-0"
 Date of drawing 12-25-23
 Date of revision 00-00-00

FLOOR PLAN OPTION #3

